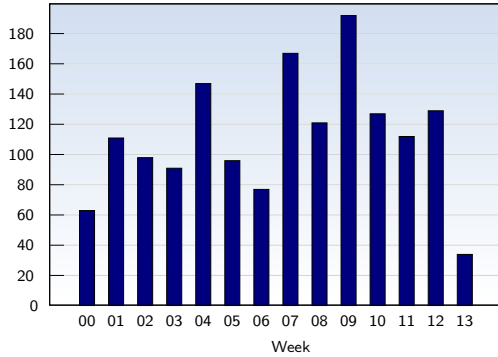




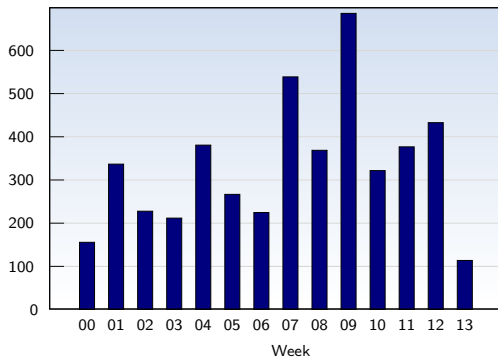
## Unique Visits



This analysis summarizes multiple page impressions of an individual visitor into unique visits. A visitor is counted as an unique visit when requesting at least one page. If more than 30 minutes have elapsed since the first page impression, further requests will be counted as a new unique visit.

Date	Amount	
Week 00	01/01/08-01/05/08	63
Week 01	01/06/08-01/12/08	111
Week 02	01/13/08-01/19/08	98
Week 03	01/20/08-01/26/08	91
Week 04	01/27/08-02/02/08	147
Week 05	02/03/08-02/09/08	96
Week 06	02/10/08-02/16/08	77
Week 07	02/17/08-02/23/08	167
Week 08	02/24/08-03/01/08	121
Week 09	03/02/08-03/08/08	192
Week 10	03/09/08-03/15/08	127
Week 11	03/16/08-03/22/08	112
Week 12	03/23/08-03/29/08	129
Week 13	03/30/08-03/31/08	34
<b>Total</b>		<b>1565</b>

## Page Views

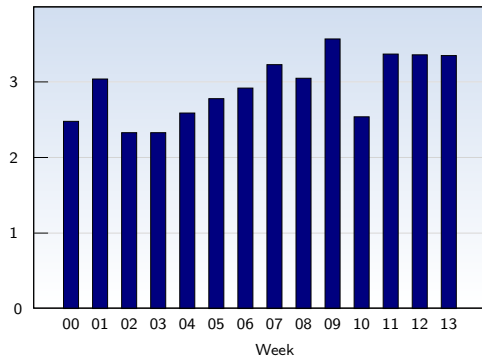


These statistics show all successful page views (also known as page impressions) and the time they were made. Only fully loaded pages are counted. Individual images and components are not included.

Date	Amount	
Week 00	01/01/08-01/05/08	156
Week 01	01/06/08-01/12/08	337
Week 02	01/13/08-01/19/08	228
Week 03	01/20/08-01/26/08	212
Week 04	01/27/08-02/02/08	381
Week 05	02/03/08-02/09/08	267
Week 06	02/10/08-02/16/08	225
Week 07	02/17/08-02/23/08	539
Week 08	02/24/08-03/01/08	369
Week 09	03/02/08-03/08/08	686
Week 10	03/09/08-03/15/08	322
Week 11	03/16/08-03/22/08	377
Week 12	03/23/08-03/29/08	433
Week 13	03/30/08-03/31/08	114
<b>Total</b>		<b>4646</b>



## Pages per Visit

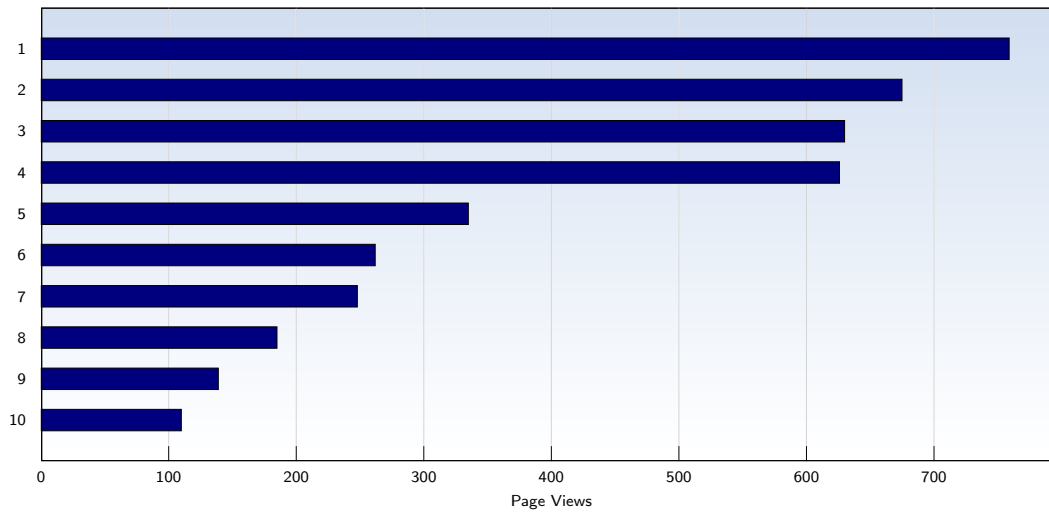


The average number of pages opened per unique visit. Only fully loaded pages are counted.

Date	Amount
Week 00 01/01/08-01/05/08	2.48
Week 01 01/06/08-01/12/08	3.04
Week 02 01/13/08-01/19/08	2.33
Week 03 01/20/08-01/26/08	2.33
Week 04 01/27/08-02/02/08	2.59
Week 05 02/03/08-02/09/08	2.78
Week 06 02/10/08-02/16/08	2.92
Week 07 02/17/08-02/23/08	3.23
Week 08 02/24/08-03/01/08	3.05
Week 09 03/02/08-03/08/08	3.57
Week 10 03/09/08-03/15/08	2.54
Week 11 03/16/08-03/22/08	3.37
Week 12 03/23/08-03/29/08	3.36
Week 13 03/30/08-03/31/08	3.35
<b>Average</b>	<b>2.97</b>



### Top 10 Popular Pages

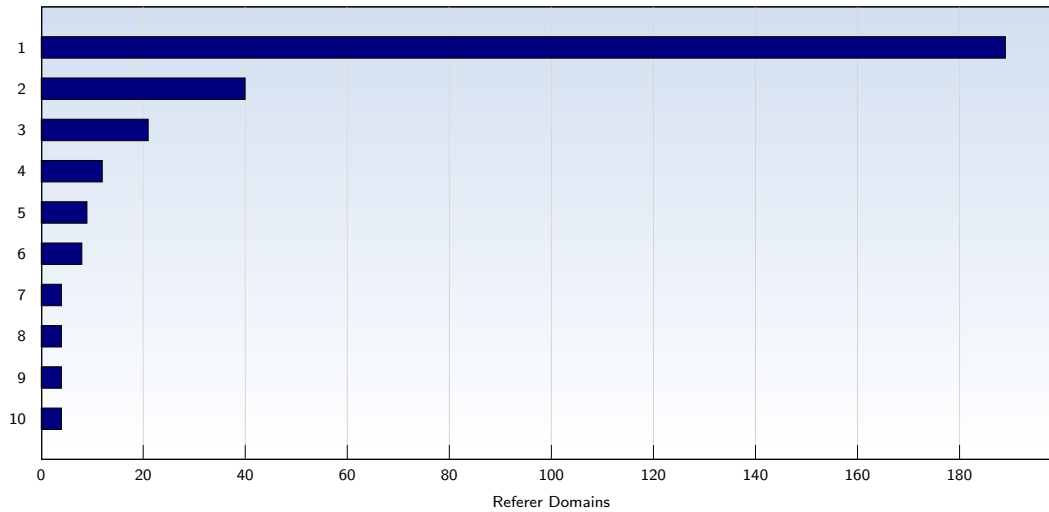


Rank	Page	Amount	%
1	<a href="http://minnesotamosaicguild.org/">minnesotamosaicguild.org/</a>	759	16
2	<a href="http://minnesotamosaicguild.org/mmgmainabout.htm">minnesotamosaicguild.org/mmgmainabout.htm</a>	675	14
3	<a href="http://minnesotamosaicguild.org/mmgtoptitle.htm">minnesotamosaicguild.org/mmgtoptitle.htm</a>	630	13
4	<a href="http://minnesotamosaicguild.org/mmgmainleft.htm">minnesotamosaicguild.org/mmgmainleft.htm</a>	626	13
5	<a href="http://minnesotamosaicguild.org/mmgmainmembers.htm">minnesotamosaicguild.org/mmgmainmembers.htm</a>	335	7
6	<a href="http://minnesotamosaicguild.org/mmgmainmeetings.htm">minnesotamosaicguild.org/mmgmainmeetings.htm</a>	262	5
7	<a href="http://minnesotamosaicguild.org/mmgmainnews.htm">minnesotamosaicguild.org/mmgmainnews.htm</a>	248	5
8	<a href="http://minnesotamosaicguild.org/mmgmainresources.htm">minnesotamosaicguild.org/mmgmainresources.htm</a>	185	3
9	<a href="http://minnesotamosaicguild.org/mmgmainjoin.htm">minnesotamosaicguild.org/mmgmainjoin.htm</a>	139	2
10	<a href="http://minnesotamosaicguild.org/mmgmaincontact.htm">minnesotamosaicguild.org/mmgmaincontact.htm</a>	110	2
	<b>Total</b>	<b>4646</b>	

These statistics show you the most frequently called pages.



## Top 10 Referer Domains



Rank	Domain	Amount	%
1	google.com	189	12
2	yahoo.com	40	2
3	barbarakeithdesigns.com	21	1
4	sheryltuorila.com	12	0
5	handmadetileassociation.org	9	0
6	msn.com	8	0
7	google.co.uk	4	0
8	live.com	4	0
9	nemaa.org	4	0
10	swantileinc.com	4	0
	<b>Total</b>	<b>330</b>	

330 out of 1565 visits contained a referer that could be evaluated. This analysis shows domains referring to your site. Subpages are summarized under the main domain.